



**PRICE GUIDE:** \$2,170,000.00

Area: 546 m2

## Modern Beachfront home - Auction on Site

Located on a prized ridge of this exclusive street, this is one of the more modern and spacious homes to hit the market and it could be yours. The home benefits from the elevation that provides views to the ocean as well as the ability to watch the sun gently set over Mooloolaba. This is the perfect blend of relaxed luxury that will make living here a dream.

Designed by Warren Coe, the home is designed to capture all of the views on offer with a maximum amount of privacy and livability. The large decks on both levels blend and flow from the main living & kitchen areas' ensuring that you'll enjoy your unique location every day.

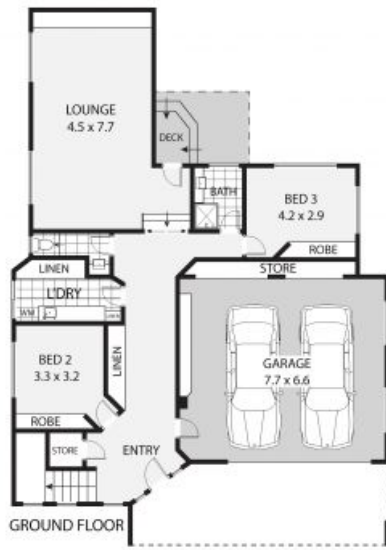
Modern homes of this nature rarely become available, get in quick and enjoy your forever beachfront lifestyle



**Anthony Gorman**  
0417587758



OFFICE



**ARTIST'S IMPRESSION ONLY:** While every attempt has been made to ensure the accuracy of this floor plan's areas and measurements of doors, windows, rooms and all other items are approximate and no responsibility is taken for any error, omission, or mis-statement. This plan is for illustrative purposes only and should only be used as such by any prospective purchaser. Floor plan by: [www.realestatefloorplans.com.au](http://www.realestatefloorplans.com.au)

57 Pacific Boulevard, BUDDINA



INTERNAL : 343m<sup>2</sup>  
 EXTERNAL : 60m<sup>2</sup>  
 TOTAL AREA : 403m<sup>2</sup>

